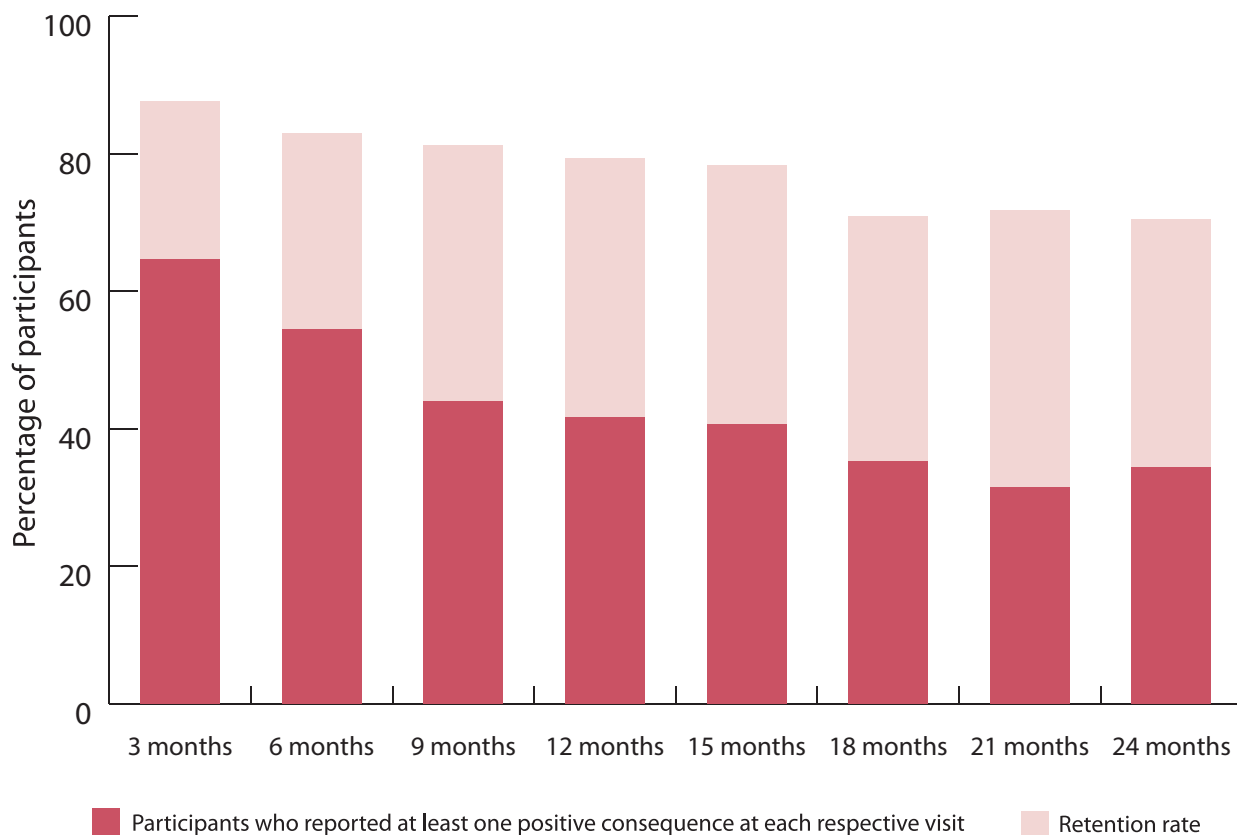


Positive and Negative Social Consequences of Participating in a Sexual-Network Study

MORGAN SPAHNIE, AMIAH MATTHEWS, DALE KISS, JANELLE RICKS, WILLIAM MILLER, AND ABIGAIL NORRIS TURNER

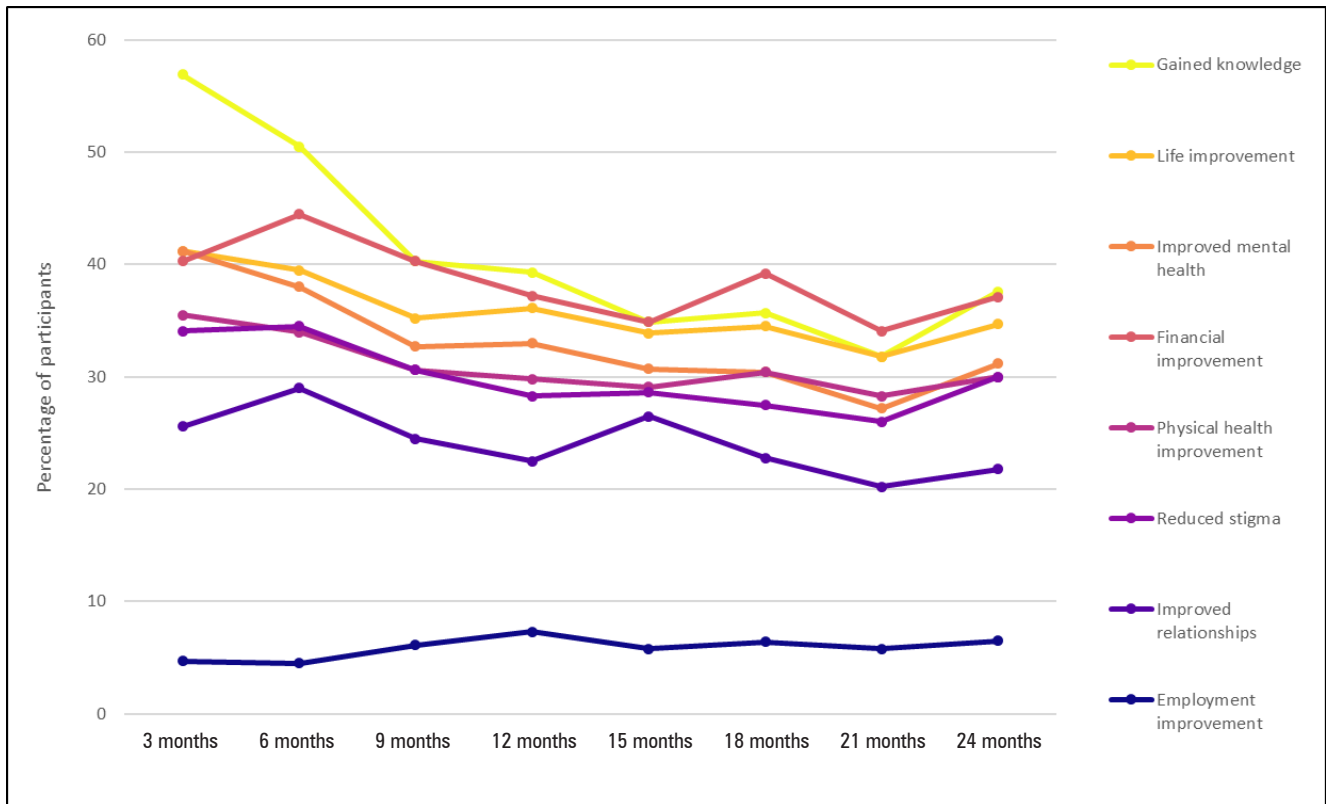
Figure 1.
Retention and Reporting of Positive Consequences over Time in the Study



The height of the pink bar shows the percentage of participants out of the total (n = 241) enrolled who completed each follow-up visit, up to the final follow-up 24 months after baseline.

The height of the red bar shows the percentage of participants out of the total enrolled who reported at least one positive consequence at each respective follow-up visit.

Figure 2.
Frequency of Listed Positive Consequences over Time in the Study¹



Each line displays the percentage of participants over time, reporting each respective positive consequence out of the total number of participants who completed each respective study visit.